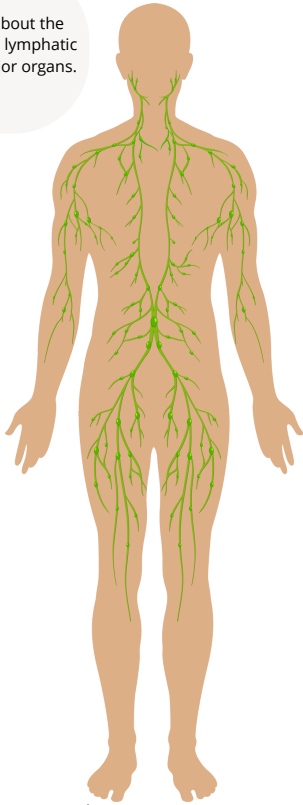


Where are the lymph nodes?

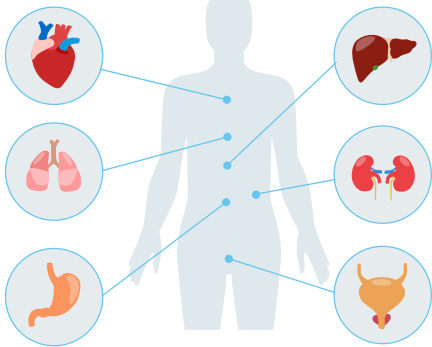
Use this document to learn more about the location and size of your lymph nodes. Use the body below to mark the approximate location of your lymph nodes.

The images below are for illustrative purposes and should only be used for informational purposes only.

Step 1: Learn about the location of your lymphatic system and major organs.

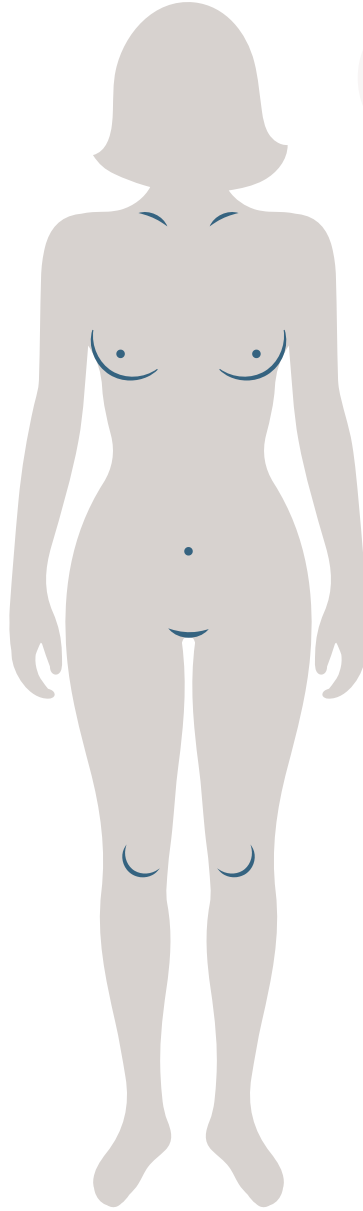


Lymphatic system

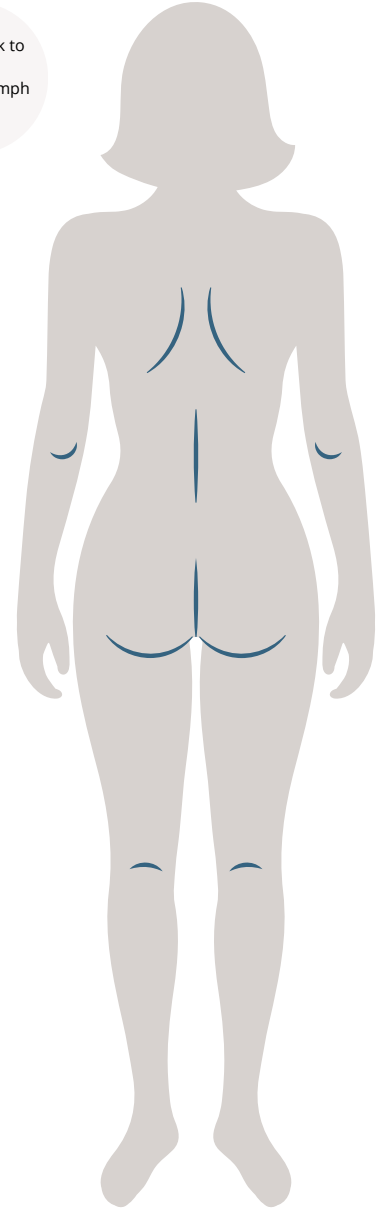


Major organs

Step 2: Add a mark to the approximate location of your lymph nodes.



Front



Back

Centimeter	Inches	Description
2/3	1/4	Pea Size
1 1/4	1/2	Mothball, peanut, USB Plug
2	3/4	Penny Size
2 1/4	7/8	Nickel Size
2 1/2	1	Quarter Size
3 1/4	1 1/4	Half Dollar Size
4	1 1/2	Ping Pong Ball Size
4.5	1 3/4	Golf Ball Size
5	2	Lime or medium sized
6 1/2	2 1/2	Tennis Ball Size
7	2 3/4	Baseball Size
7.5	3	Large Apple
10	4	Softball
11.5	4 1/2	Grapefruit

Approximate Diameter Size

Step 3: Add additional notes, including the size or other important notes provided by your doctor. Use can also use the chart on the left to help understand size comparison.

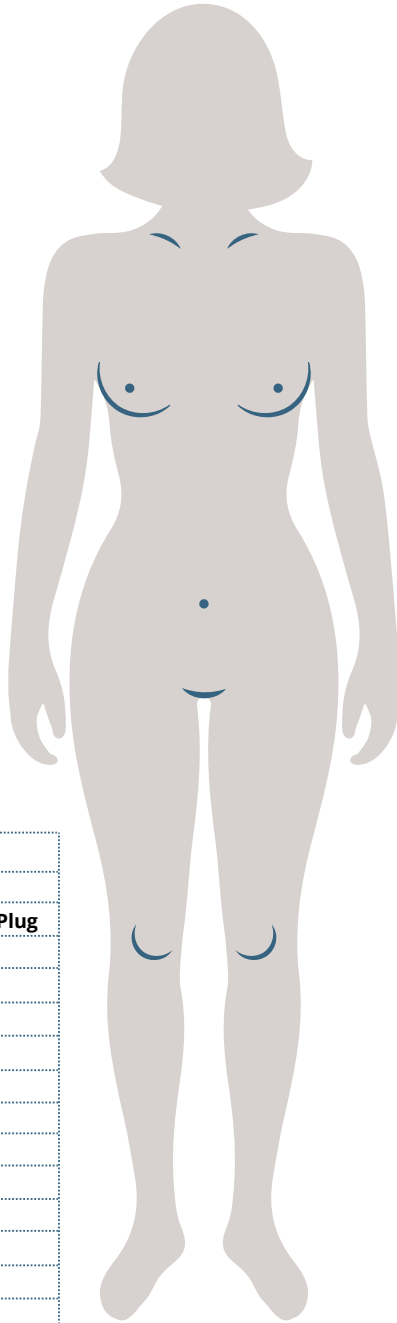
Date:

Appointment Notes:

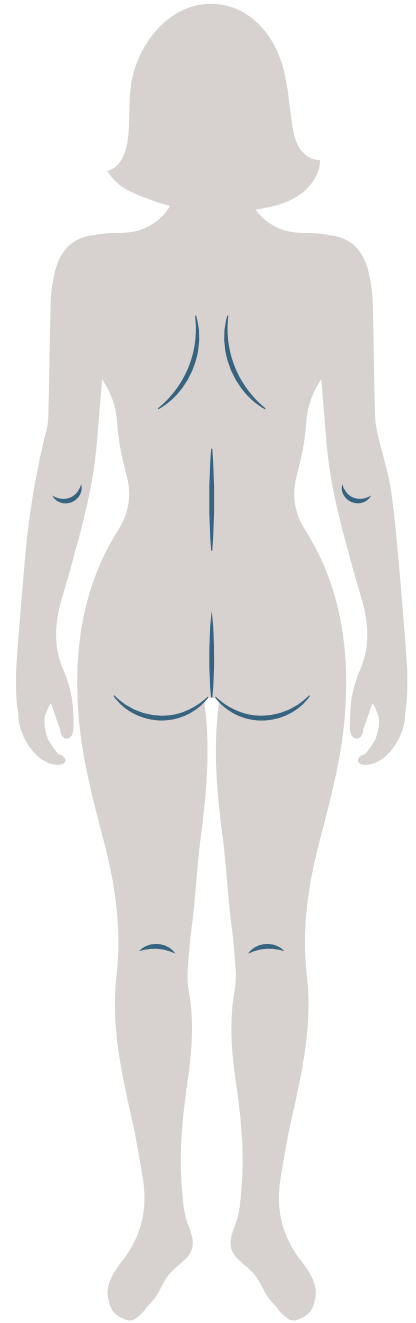
Where are the lymph nodes?

Use this document to learn more about the location and size of your lymph nodes. Use the body below to mark the approximate location of your lymph nodes.

The images below are for illustrative purposes and should only be used for informational purposes only.



Front



Back

Centimeter	Inches	Description
2/3	1/4	Pea Size
1 1/4	1/2	Mothball, peanut, USB Plug
2	3/4	Penny Size
2 1/4	7/8	Nickel Size
2 1/2	1	Quarter Size
3 1/4	1 1/4	Half Dollar Size
4	1 1/2	Ping Pong Ball Size
4.5	1 3/4	Golf Ball Size
5	2	Lime or medium sized
6 1/2	2 1/2	Tennis Ball Size
7	2 3/4	Baseball Size
7.5	3	Large Apple
10	4	Softball
11.5	4 1/2	Grapefruit

Approximate Diameter Size

Date:

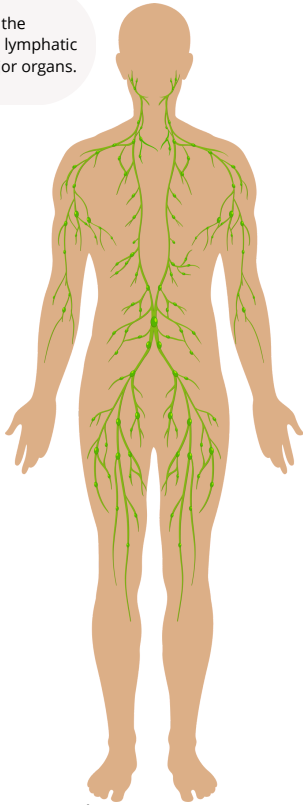
Appointment Notes:

Where are the lymph nodes?

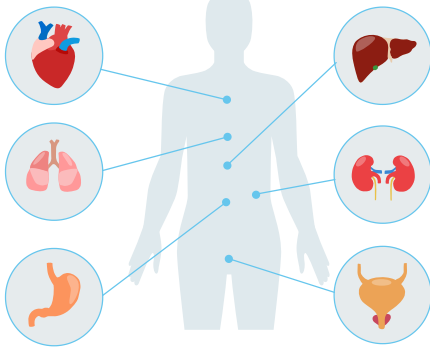
Use this document to learn more about the location and size of your lymph nodes. Use the body below to mark the approximate location of your lymph nodes.

The images below are for illustrative purposes and should only be used for informational purposes only.

Step 1: Here is the location of your lymphatic system and major organs.



Lymphatic system

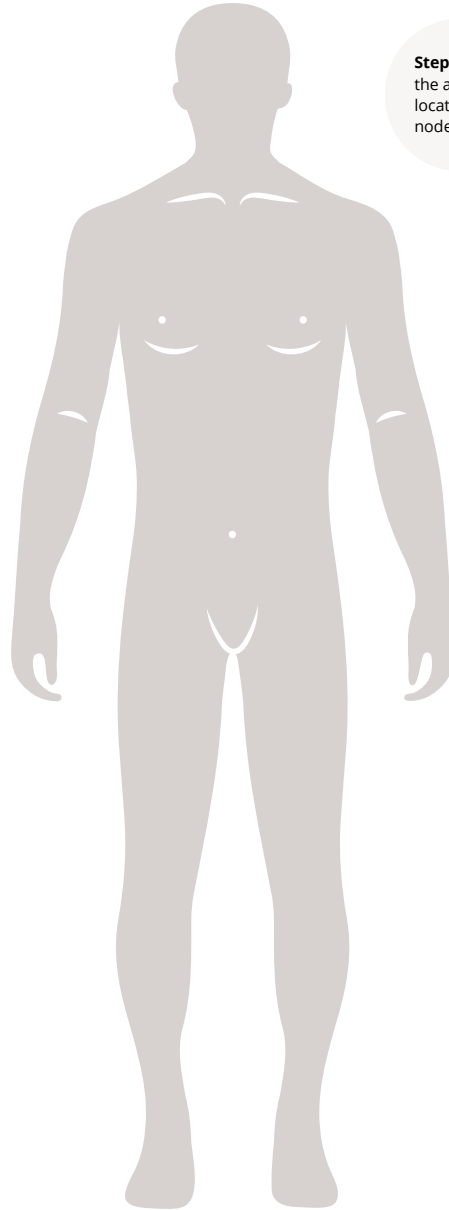


Major organs

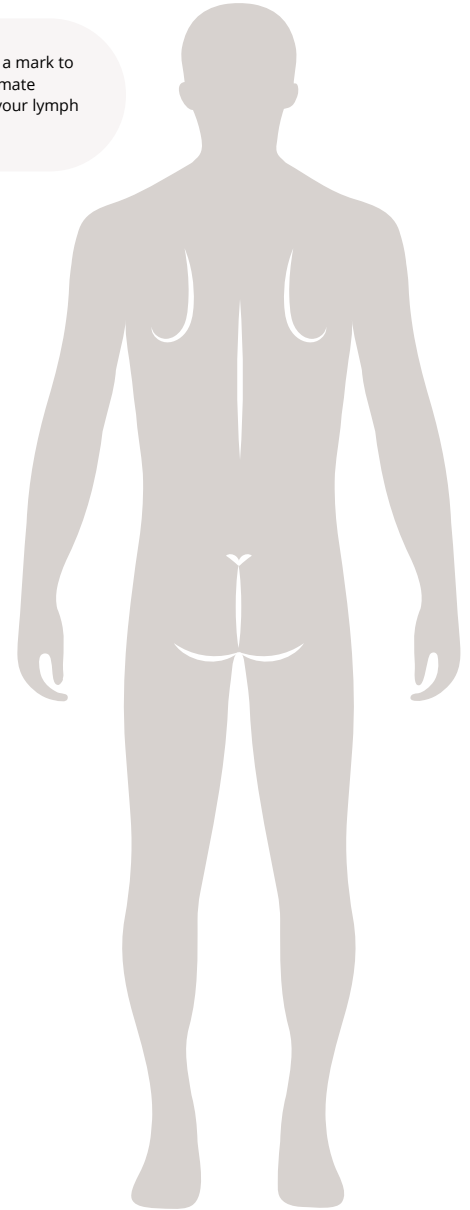
Centimeter	Inches	Description
2/3	1/4	Pea Size
1 1/4	1/2	Mothball, peanut, USB Plug
2	3/4	Penny Size
2 1/4	7/8	Nickel Size
2 1/2	1	Quarter Size
3 1/4	1 1/4	Half Dollar Size
4	1 1/2	Ping Pong Ball Size
4.5	1 3/4	Golf Ball Size
5	2	Lime or medium sized
6 1/2	2 1/2	Tennis Ball Size
7	2 3/4	Baseball Size
7.5	3	Large Apple
10	4	Softball
11.5	4 1/2	Grapefruit

Approximate Diameter Size

Step 2: Add a mark to the approximate location of your lymph nodes.



Front



Back

Appointment Notes:

Date:

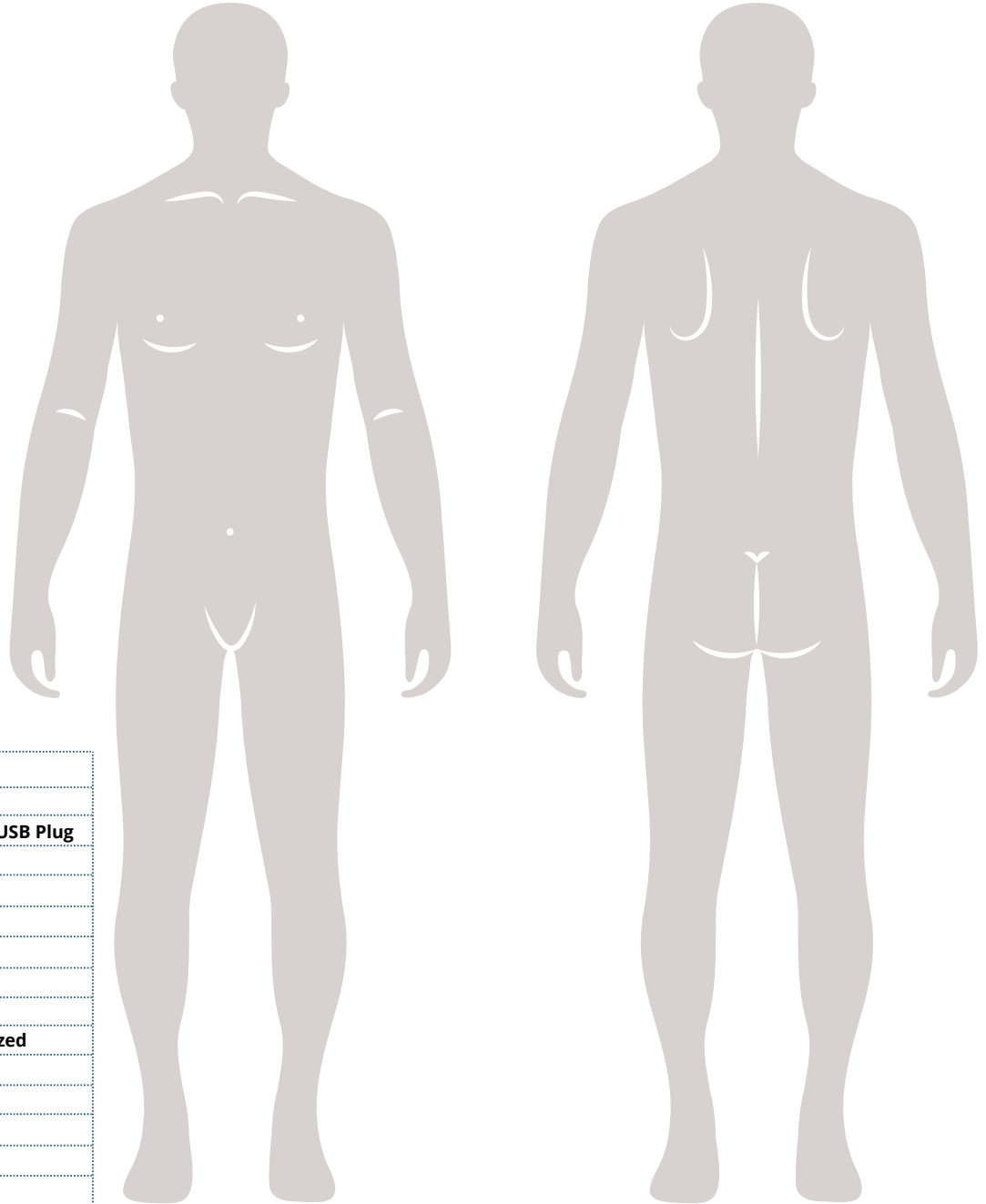
Step 3: Add additional notes, including the size or other important notes provided by your doctor. Use can also use the chart on the left to help understand size comparison.



Where are the lymph nodes?

Use this document to learn more about the location and size of your lymph nodes. Use the body below to mark the approximate location of your lymph nodes.

The images below are for illustrative purposes and should only be used for informational purposes only.



Front

Back

Centimeter	Inches	Description
2/3	1/4	Pea Size
1 1/4	1/2	Mothball, peanut, USB Plug
2	3/4	Penny Size
2 1/4	7/8	Nickel Size
2 1/2	1	Quarter Size
3 1/4	1 1/4	Half Dollar Size
4	1 1/2	Ping Pong Ball Size
4.5	1 3/4	Golf Ball Size
5	2	Lime or medium sized
6 1/2	2 1/2	Tennis Ball Size
7	2 3/4	Baseball Size
7.5	3	Large Apple
10	4	Softball
11.5	4 1/2	Grapefruit

Approximate Diameter Size

Date:
Appointment Notes: